

**PALFINGER**



**SANY**

PALFINGER SANY TRUCK CRANE STC500



- ▷ **Engine:** Wei Chai Euro 5
- ▷ **Lifting capacity:** 50 t
- ▷ **Boom length:** 11.3 – 43.5 m, 5 sections
- ▷ **Jib:** 9.5 – 16 m
- ▷ **Warranty term:** 2250 working hours or 18 months

QUALITY  
CHANGES  
THE WORLD

### Driver's Cab

Unique and ergonomic two-man-cab, adjustable left side steering wheel and large field of vision. Seats with air suspension and three-point seat belt. Laminated safety windshield with wiper and wash system. Independent cab heater system. Dashboard includes full driving controls.



### Engine

6-cylinder engine, WeiChai WP10.336E53, Euro 5, turbo-charged with intercooler electronically controlled. Fuel tank capacity 350 l, lockable.



### Outriggers

H-framed outriggers, fully hydraulic with four vertical and horizontal cylinders incl. stabilizer plates. Fifth additional outrigger beneath the driver's cab with one vertical cylinder and a stabilizer plate. Independent horizontal and vertical control of outriggers. Control panels on both sides of the crane. Inclination display on both sides. Outrigger span: 7.2 m x 6.0 m

### Transmission

Shangxi FAST, manual transmission with splitter, 9 gears forward, 1 gear reverse.

### Tires

Tire Dimension: 12.00 R20 Radial for highways and offroad use. Single tire on the front axle, dual-tire on second and third axles.

### Brake

Driving brake: Dual circuit air booster brake acted by foot pedal. Exhaust brake Emergency and park brake controlled by hand brake handle. ABS

### Electrical System

24V, CAN-Bus. Full lighting package: Headlights, rear lights, brake lights, turn signals, reflectors. Lighting package meets EU regulations.



### Suspension

Front suspension: steel leaf spring suspension on axle 1, balanced two-axle steel leaf spring suspension on axles 2 and 3.

Superstructure

PALFINGER SANY STC500

**Operator's Cab**

Spacious comfortable crane cab with large field of vision, laminated safety glass on all sides with wiper and wash system on front and upper glass. Seat with air suspension and head rest. Independent cab heater system. Fixed steel guard on front and upper side of the operator's cab.



**Boom**

Boom shape: U-shape  
 Boom length: 11.3 m to 43.5 m; Telescopic boom: 5 sections, 6 rollers on boom head. Lattice jib 9.5 – 16 m.



**Safety devices**

Colour monitor indicates important parameters: torque percentage, hook load, rated load, boom extension, angle, slewing radius, lifting height, etc. Graphic symbols for: diagnostics, alarm function and working area limiter. Integrated parameter setup. Data storage included (black box). High voltage detector optional.



**Main winch**

Main hoist winch with internal planetary gear and spring disk brake. Single rope pull force: 181 kN. Rope specification: 18 mm x 220 m

**Auxiliary winch**

Auxiliary hoist winch with internal planetary gear and spring disk brake. Auxiliary hoist winch usable with foldable roster sheave. Single rope pull force: 181 kN Rope specification: 18 mm x 130 m

**Counterweight**

3.6 t fixed, additional 3 t

**Hydraulic system**

Triple gear pump: The 1st pump drive the winches, the lifting and hoist gear as well as the telescopic boom. The 2nd pump drives the outriggers and slewing gear. Hydraulic tank 840 l.

**Hook block**

6-roller hook block with single hook. Capacity 50 t. Hook block weight 550 kg. Ball type latch hook. Capacity 5 t. Weight of the hook 90 kg.

## Dimensions and Weights

Overall length		13700 mm
Overall width		2750 mm
Overall height		3750 mm
Axle distance	Axle 1-2	1450 mm
	Axle 2-3	4200 mm
	Axle 3-4	1350 mm
Overall weight		42000 kg
Axle load	Axle load 1-2	16000 kg
	Axle load 2-3	26000 kg

## Crane Carrier

Engine model	WeiChai WP10.336E53
Rated power	247 kw
Rated torque	1550/(1200-1500) Nm/rpm
Max. travelling speed	80 km/h
Min. turning radius	11 m
Min. turning radius of boom head	14,5 m
Wheel formula	8x4x4
Wheel dimension	12.00R20
Spare wheel	included
Min. ground clearance	240 mm
Approach angle	14°
Departure angle	10°
Max. gradeability	40 %
Fuel reservoir	350 l
Fuel consumption per 100 km	≤45 l
Working fuel consumption per hour	13 l/h
Standard toolbox	included
Fire extinguisher	included
Heating system in lower and upper cab	included

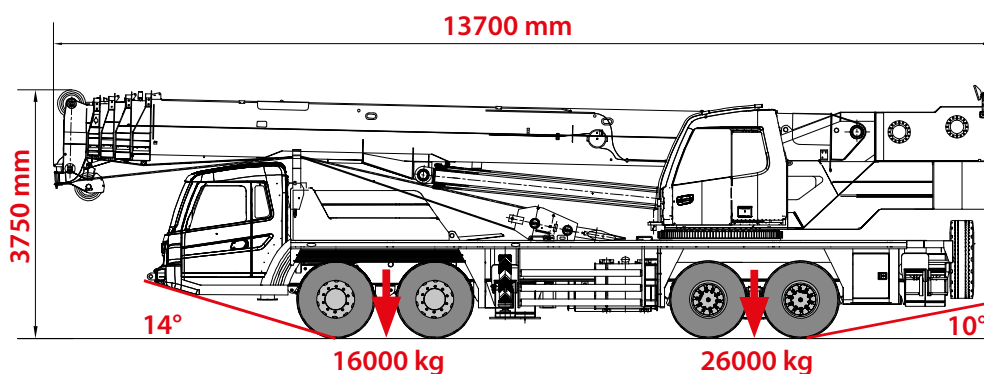
## Crane Superstructure

Temperature range		-25°C till +40°C
Min. rated range		3 m
Tail slewing radius of swingtable		3 m
Boom section		5
Boom shape		U-shape
Max. lifting moment	Base boom	205 tm
Boom length	Base boom	11.3 m
	Full-extend boom	43.5 m
	Full-extend boom+jib	59,5 m
Outrigger span (Longitudinal X Transversal)		7.2x6.0 m
Jib offset		0° 15° 30°
Max. single rope lifting speed of main winch (no load)		130 m/min
Max. single rope lifting speed of auxiliary winch (no load)		130 m/min
Full extension/retraction time of boom		120/100 s
Full lifting/descending time of boom		60/80 s
Slewing speed		2 r/min
High Voltage Detector		included

## Options

- Arctic Package for temperature range till -40°C
- Air conditioning for lower and upper cab
- Parktronic, rear View Camera

## Product dimensions



## Service

We provide you with high-quality after-sales service and commit ourselves to the following THREE core principles:

- ▷ **ONE:** Give us ONE call and we will take care of your problem
- ▷ **TWO:** We offer TWO days of free training for your operators
- ▷ **THREE:** We do THREE inspections prior shipping the machine to you

We provide on-site service within 48 hours by our dealers, service stations or service specialists. Our dealers, service stations and service specialists are regularly trained by PALFINGER SANY. The service equipment they use will enable them to provide you high quality service.

For PALFINGER SANY it is extremely important to provide a fast spare part supply for the product range offered to you. Therefore, we operate spare parts center with more than 4.100 parts in stock. Parts will be dispatched within 24 hours or can be directly picked up by yourself in our warehouse during our office hours.

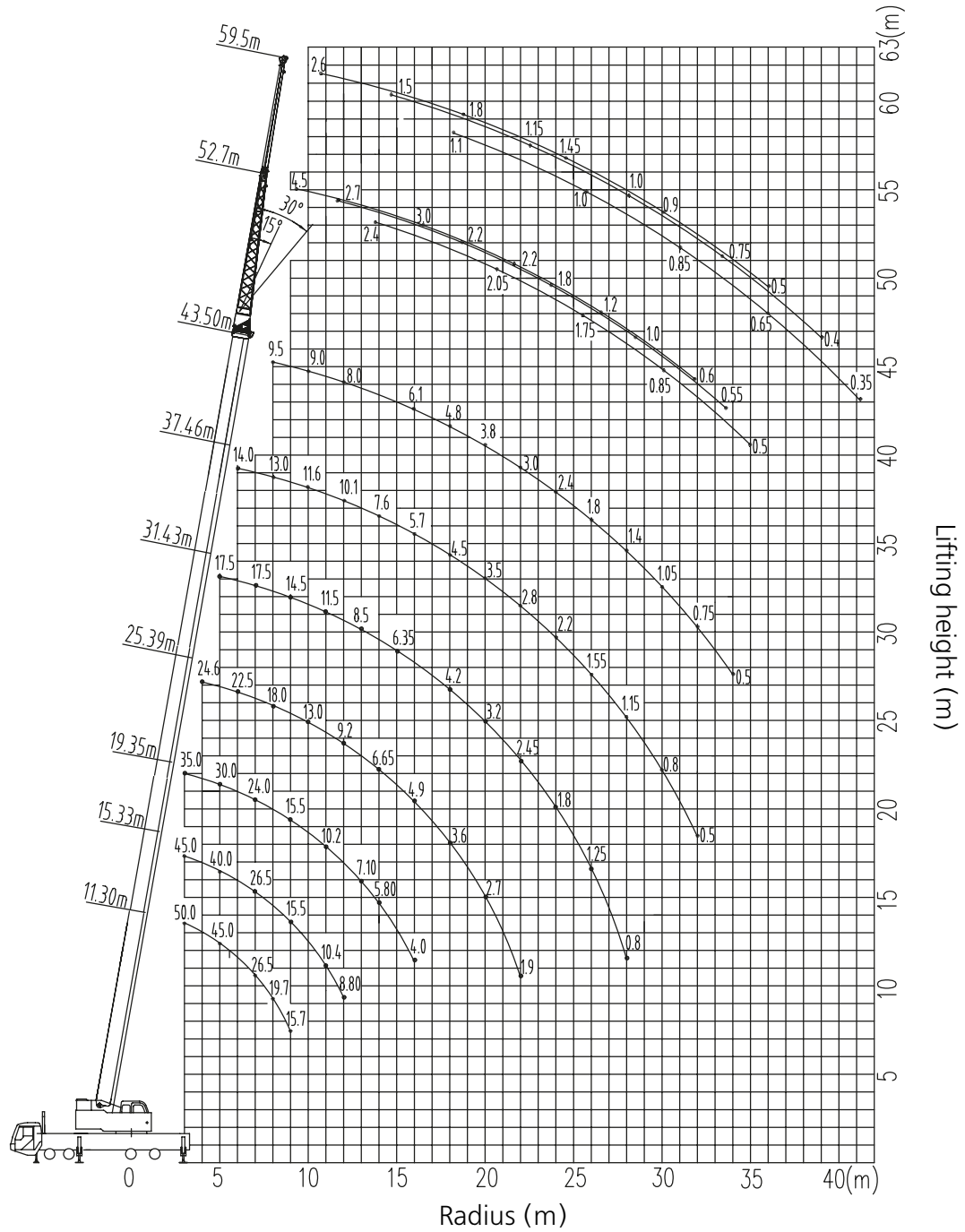
PALFINGER SANY takes technical problems very serious. In the case of any technical issues, the company offers an extended warranty period of 2250 hours or 18 months from putting cranes into operation.



PALFINGER SANY will provide you with high-quality after-sales service. Our service will help you solve your problem the fastest and most reliable way.

## Assembly line



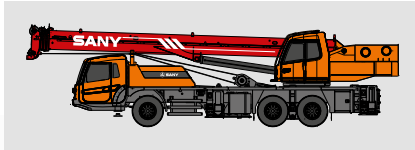


## Load chart for main boom

Main boom							
Radius	11.3 m	15.33 m	19.35 m	25.39 m	31.43 m	37.46 m	43.5 m
3	50000	45000	35000				
3.5	50000	45000	35000				
4	48000	45000	35000	24600			
4.5	45000	43000	33000	24600			
5	41000	40000	30000	24200	17500		
5.5	36000	36000	28000	24000	17500		
6	32500	32500	26500	22500	17500	14000	
6.5	29500	29500	25000	21000	17500	14000	
7	26500	26500	24000	20000	17500	14000	
7.5	22300	23500	22000	19000	16700	13500	
8	19700	19500	21000	18000	16000	13000	9500
9	15700	15500	15500	16000	14500	12500	9500
10		12500	12500	13000	13500	11600	9300
11		10400	10200	10900	11500	10700	9000
12		8800	8400	9200	9800	10100	8500
14			5800	6650	7200	7600	7500
16			4000	4900	5500	5700	6100
18				3600	4200	4500	4800
20				2700	3200	3500	3800
22				1900	2450	2800	3000
24					1800	2200	2400
26					1250	1550	1800
28					800	1150	1400
30						800	1050
32						500	750
34							500
Parts of line	12	10	8	6	4	4	3

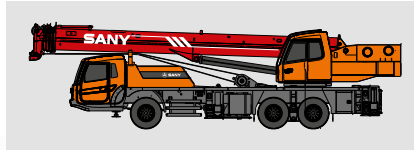
# Product overview

## ▷ Truck Cranes



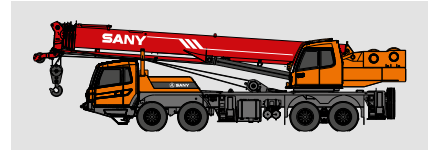
### STC250

Max. lifting capacity: 25 t, Main boom: 4 sections, Extension boom: 10.65-33.5 m, Chassis: 6x4x2



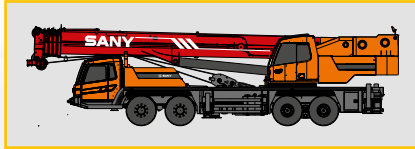
### STC250-5

Max. lifting capacity: 25 t, Main boom: 5 sections, Extension boom: 10.5-40.5 m, Chassis: 6x4x2



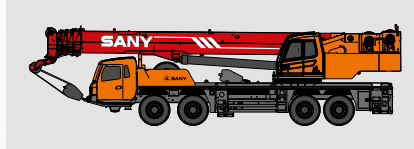
### STC300

Max. lifting capacity: 30 t, Main boom: 5 sections, Extension boom: 10.65-40.5 m, Chassis: 8x4x4



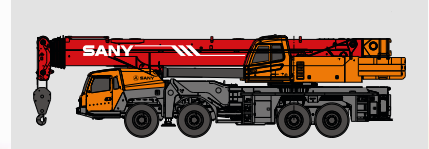
### STC500

Max. lifting capacity: 50 t, Main boom: 5 sections, Extension boom: 11.3-43.5 m, Chassis: 8x4x4



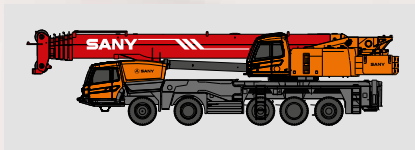
### STC800

Max. lifting capacity: 80 t, Main boom: 5 sections, Extension boom: 12.2-47 m, Chassis: 8x4x4



### STC1000S

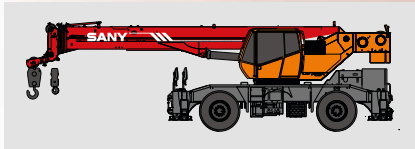
Max. lifting capacity: 100 t, Main boom: 6 sections, Extension boom: 12.26-56 m, Chassis: 8x4x4



### STC1300

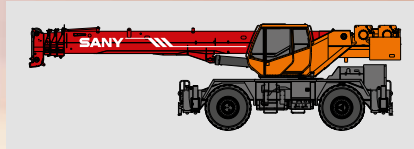
Max. lifting capacity: 130 t, Main boom: 6 sections, Extension boom: 13.3-78.1 m, Chassis: 10x6x6

## ▷ Rough Terrain Cranes



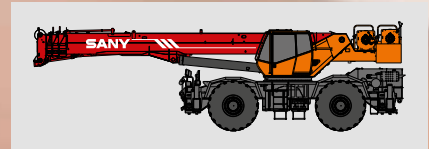
### SRC250C

Max. lifting capacity: 25 t, Main boom: 4 sections, Extension boom: 9.9-31.5 m, Chassis: 4x4x4



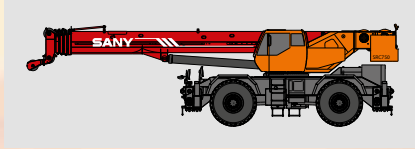
### SRC350C

Max. lifting capacity: 35 t, Main boom: 4 sections, Extension boom: 10-31.5 m, Chassis: 4x4x4



### SRC550C

Max. lifting capacity: 55 t, Main boom: 5 sections, Extension boom: 11.25-43 m, Chassis: 4x4x4



### SRC750C

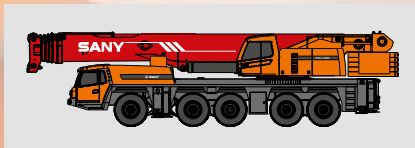
Max. lifting capacity: 75 t, Main boom: 5 sections, Extension boom: 11.8-45 m, Chassis: 4x4x4



### SRC1200C

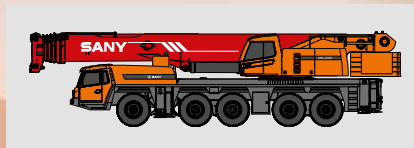
Max. lifting capacity: 120 t, Main boom: 5 sections, Extension boom: 13-49 m, Chassis: 4x4x4

## ▷ All Terrain Cranes



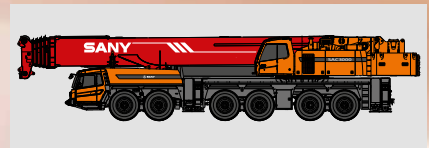
### SAC1800

Max. lifting capacity: 180 t, Main boom: 6 sections, Extension boom: 13.5-62 m, Chassis: 10x8x10



### SAC2200

Max. lifting capacity: 220 t, Main boom: 6 sections, Extension boom: 13.5-62 m, Chassis: 10x8x10



### SAC3000

Max. lifting capacity: 300 t, Main boom: 7 sections, Extension boom: 15.4-80 m, Chassis: 12x8x12



## CONTACT DETAILS

**PALFINGER SANY**  
International Mobile Cranes Sales GmbH

F.-W.-Scherer Straße 24 | 5020 Salzburg | Austria  
 ☎ +43 662 4684-0 | 📠 +43 662 4684-2437  
 info@palfinger-sany.com  
 www.palfinger-sany.com

\* Products shown in the leaflet do not always correspond to the standard version.  
 Country-specific regulations must be observed. Dimensions may vary.  
 Subject to technical changes, errors and translation mistakes.  
 KPSTC250CM1+ENG, 01/17